


# PASSENGER REPLACEMENT DOOR PANELS



 **LIFT SOLUTIONS**

**LIFT SOLUTIONS INC.**  
1806 S. Lake Stevens Rd. Lake Stevens, WA 98258

1-888-277-8310  
info@liftsolutions.net  
[www.liftsolutions.net](http://www.liftsolutions.net)

AUG 2019



# PASSENGER DOOR

## QUOTE REQUEST FORM



Company: \_\_\_\_\_

Delivery Date: \_\_\_\_\_

Address: \_\_\_\_\_

Delivery Address: \_\_\_\_\_

Contact Person: \_\_\_\_\_

Email: \_\_\_\_\_

Attention: \_\_\_\_\_

Phone: \_\_\_\_\_

P.O.#: \_\_\_\_\_

Job Name / Address: \_\_\_\_\_

Job City / State: \_\_\_\_\_

Signature: \_\_\_\_\_

### QUANTITY

( ) Sets of Landing Doors ( ) Sets of Car Doors

### APPROVAL DRAWING REQUIRED?

Yes  No

### FINISH

- Prime Painted Grey Matte (RAL 7044)
- Painted (RAL \_\_\_\_\_)
- 304 Stainless Steel #4 (satin)
- 316 Stainless Steel #4 (satin)
- Other \_\_\_\_\_

### DOOR TYPE

- Single Speed Side Opening - 1SO
- Single Speed Center Opening - 1CO
- Two Speed Side Opening - 2SO
- Two Speed Center Opening - 2CO
- Three Speed Side Opening - 3SO

### HANDING

- Left  Right  Center
- 

### OPENING WIDTH

- 36 in
- 42 in
- 48 in
- 54 in
- 60 in

### OPENING HEIGHT

- 84 in
- 96 in
- 108 in

### PANEL THICKNESS

- 1 1/4 in (STD)
- 1 1/2 in
- 1 3/8 in
- 1 in (CAR ONLY)

**OR**

\_\_\_\_\_ in \_\_\_\_\_ in  
Opening Width Opening Height

\_\_\_\_\_ in \_\_\_\_\_ in  
Panel Width Panel Height

### Operator Type

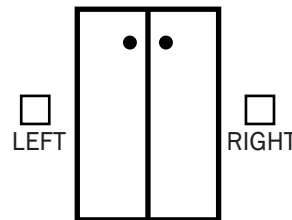
- GAL Standard
- Other (\_\_\_\_\_)

### UNLOCKING KEY HOLE

- STD ESCUTCHEON
- NONE

### KEYHOLE LOCATION

LOOKING FROM HALLWAY



ONLY REQUIRED FOR CENTER OPENING DOORS

### Door Panel Kit Includes:

Nylon Gibs, Safety Retainer, Sight Guard, Escutcheon & Neoprene Astragal for Center Opening Doors

1 1/2 HR UL Labels (landing doors only) where allowed

### Material Not Included:

Access Switch, Braille Plates, Painted/Applied Floor Designations

### Panel Construction:

16 GA front sheet & back sheet Reinforced Panel drilled per operator template

## RAL COLOR CHART

RAL 1014 IVORY	RAL 1015 LIGHT IVORY	RAL 1018 ZINC YELLOW	RAL 1019 *** GREY BEIGE SEMI GLOSS	RAL 1023 *** TRAFFIC YELLOW HIGH GLOSS	RAL 3000 *** FLAME RED HIGH GLOSS	RAL 3002 RED	RAL 3003 RUBY RED	RAL 5002 ULTRAMARINE BLUE	RAL 5003 SAPPHIRE BLUE	RAL 5005 SIGNAL BLUE
RAL 5010 GENTIAN BLUE	RAL 5011 STEEL BLUE	RAL 5013 COBALT BLUE	RAL 5015 SKY BLUE	RAL 5017 TRAFFIC BLUE	RAL 5019 CAPRI BLUE	RAL 5021 WATER BLUE	RAL 5024 PASTEL BLUE	RAL 6005 GREEN	RAL 6014 YELLOW OLIVE	RAL 6018 YELLOW GREEN
RAL 6029 MINT GREEN	RAL 7004 SIGNAL GREY	RAL 7006 BEIGE GREY	RAL 7010 *** GREY SANDTEXTURE	RAL 7012 BASALT GREY	RAL 7016 ANTHRACITE GREY	RAL 7021 BLACK GREY	RAL 7030 STONE GREY	RAL 7032 PEBBLE GREY	RAL 7035 LT GREY	RAL 7037 *** DUSTY GREY SEMI GLOSS
RAL 7039 QUARTZ GREY	RAL 7040 GREY	RAL 7043 TRAFFIC GREY	RAL 7044 *** GREY PRIME MATTE	RAL 7045 TELEGREY	RAL 7046 TELEGREY 2	RAL 7047 TELEGREY 4	RAL 9005 JET BLACK	RAL 8017 CHOCOLATE BROWN	RAL 8019 GREY BROWN	RAL 8028 TERRA BROWN
RAL 9001 CREAM	RAL 9002 GREY WHITE	RAL 9003 SIGNAL WHITE	RAL 9016 TRAFFIC WHITE							

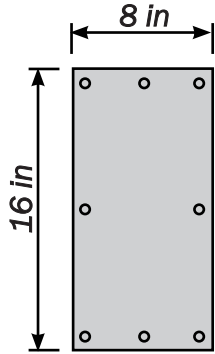
UNLESS NOTED \*\*\* STANDARD PAINT FINISH IS GLOSS FOR 100% COLOR VERIFICATION REQUEST A PAINT CHIP

# REINFORCING PLATES

QUOTE REQUEST FORM

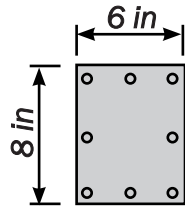
## BLANK REINFORCING PLATES

Drill and Tap in Field



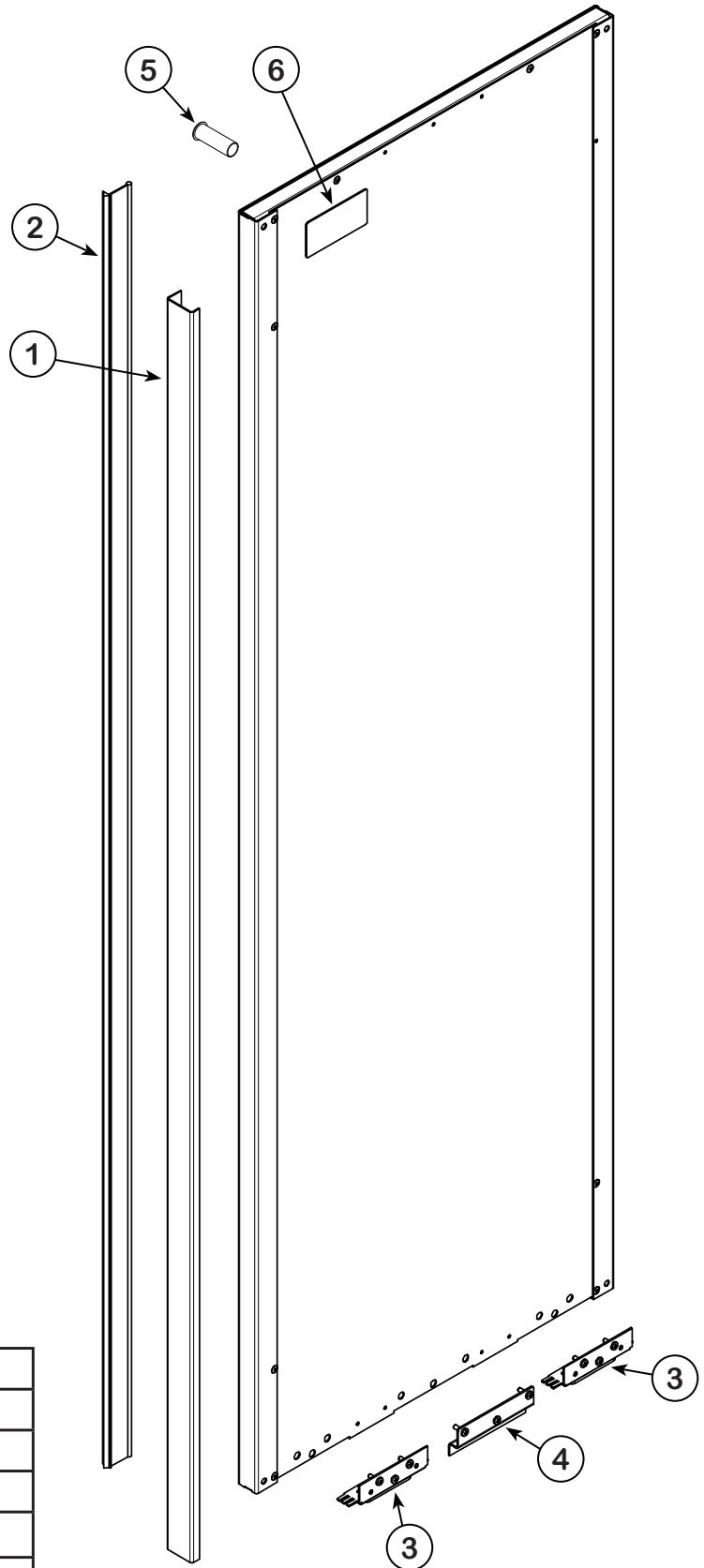
Car Door Clutch

**A**



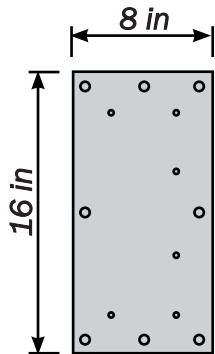
Landing Door Roller

**B**



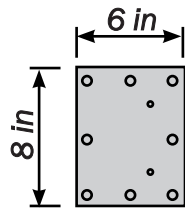
## GAL STUD PLATES

All Plates 7ga thick



Car Door Clutch

**A**



Landing Door Roller

**B**

6	1 1/2 HR UL LABEL (LANDING DOOR ONLY)
5	ESCUTCHEON (DRILL HOLE IN FIELD)
4	SAFETY RETAINER
3	GIBS FOR 1/2 in SLOT
2	ASTRAGAL (center opening)
1	LEADING EDGE SIGHT GUARD (1 3/4in wide)
ITEM	DESCRIPTION
INCLUDED COMPONENTS	

**SIGHT GUARD  
GIB'S  
RETAINERS  
ESCUTCHEON**

**DOOR TYPES**

Single Speed Center Opening  
Two Speed Center Opening  
Single Speed Side Opening  
Two Speed Side Opening  
Three Speed Side Opening

**DOOR PANEL CONSTRUCTION**

16 GA Front  
16 GA Back Sheet

**DOOR FINISH**

Stainless Steel 304 #4 & 316 #4  
Baked on Powder Coat

